

NZSEG

New Zealand Skills & Education Group

STAR & GATEWAY COURSES 2019

Transforming lives through the power of learning

New Lynn | Avondale | Auckland CBD | Manukau | Hamilton

WHAT IS ATC MILITARY PREP?

Established originally in 1991 in Northland, Advance Training Centres (ATC) is an educational institute with campuses in Auckland and Waikato, providing free Military-oriented programmes for youth between 16-19 years old.

We are focused on empowering our tamarikitanga with knowledge and soft skills to succeed and the confidence to become successful role models within their communities.

ATC will help them to focus on their education and develop career goals. Our programmes provide an exciting, safe and supportive learning environment and are designed to provide students with recognised qualifications and clear pathways to the New Zealand Defence Forces, Police & other services, along with other sectors of employment, or higher level study. Each year new students flourish in the atmosphere of a military-styled education system, achieving academic, physical, and vocational heights they never thought possible.

OUR VISION

Life Long Learning -
Kia whakapumau ki te matauranga

OUR MISSION

To promote and encourage lifelong learning for the betterment of students and their surrounding communities.

OUR PHILOSOPHY

Nga Pou E Wha - Our Four Pillars

TIKANGA - Punctual & Present

MĀTAURANGA - Academic Study

POU WHAKAHAERE - Military Edge

POU ĀRAHI - Code of Conduct

ATC STAR/GATEWAY COURSES

ATC STAR/Gateway courses are an opportunity for students to explore in a literal sense, what life is like within the New Zealand Army, Navy and Air force and other related trades.

Standard #	Course Title	Level	Credits
ARMED FORCES & POLICE			
24110	Introduction to Armed Forces and Police	2	2
Total			2
SELF AWARENESS			
467	Demonstrate personal and social development through participation in adventure based learning	2	3
24098	Demonstrate and apply knowledge of basic foot drill in the New Zealand Cadet Force	2	2
Total			5
OUTDOORS			
467	Demonstrate personal and social development through participation in adventure based learning	2	3
12349	Demonstrate knowledge of time management	2	3
24098	Demonstrate and apply knowledge of basic foot drill in the New Zealand Cadet Force	2	2
24098	Demonstrate and apply knowledge of the basic principles of leadership for a New Zealand Cadet Forces cadet	2	2
4573	Communicate in the outdoors using two-way radio	2	1
Total			11



WHAT IS NZSE?

- A range of industry related courses & programmes.
- Smooth pathways to higher level studies.
- Inspiring and motivating tutors who have industry experience in their field.
- A diverse learning environment with a multicultural student population.
- Comprehensive student support, from learning through to employment.
- A dedicated Careers Services Team who identify opportunities for internships, part time jobs and full time jobs.
- Flexibility to choose your study location from our four campuses, Auckland wide.



OUR VISION

Transforming lives through the power of learning.

OUR MISSION

To produce successful graduates through exciting educational experience.

OUR VALUES

We **CARE**

Creativity - We encourage innovation

Achievement - We strive for success

Respect - We celebrate diversity

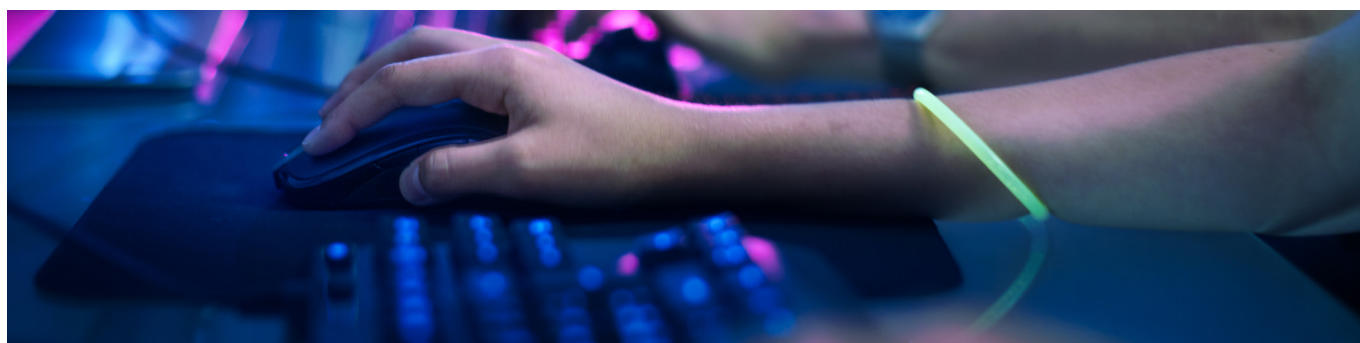
Empowerment - We enable potential



TECHSCHOOL STAR COURSES

Into virtual simulations and data? Or are you more of a hands-on tech person? Our STAR/Gateway courses allow you to dabble in various types of tech fields, while gaining credits towards NCEA.

INTRODUCTION TO TECHSCHOOL			
Standard #	Course Title	Level	Credits
THE MACHINE			
18755	Identify and resolve user's minor computer problems	3	5
18753	Recommend hardware for personal computer use	3	5
Total			10
THE EXPERIMENT			
5947	Use computer technology to solve a specific problem	3	3
5945	Automate processes in a computer application using a scripting language	3	5
Total			8
THE CONNECTION			
6745	Demonstrate and apply knowledge of single-user and multi-user computer operating systems	3	4
5947	Describe data communications	3	4
5945	Demonstrate knowledge of the principles of computer networks	3	5
Total			13
Total Credits			31



EARLY CHILDHOOD EDUCATION GATEWAY COURSES

We offer an ECE tertiary qualification to students alongside of their school curriculum. Students taking this option will be required to complete the course in a licensed early childhood centre.

NATIONAL CERTIFICATE IN EARLY CHILDHOOD EDUCATION & CARE - LEVEL 3

Standard #	Course Title	Level	Credits
10020	Describe personal and environmental hygiene and safety practices in an ECE service	2	5
20407	Demonstrate knowledge of cultural diversity in an ECE service	3	4
26709	Construct an observation of a child in an ECE service	3	3
26712	Demonstrate knowledge of, and apply, age-related nutrition needs in providing food for a child in an ECE service	2	4
26715	Describe professional image and demonstrate professional behaviours required of an early childhood educator	2	3
27145	Develop, implement and evaluate a learning plan for children in an ECE service	3	4
27146	Demonstrate knowledge of organisations relevant to ECE services in Aotearoa/New Zealand	3	4
Total			21



CONTACT & BOOKINGS

Course Dates: STAR Courses will be run through the school holidays. The dates and times will be posted on our website also.

- 15 April 2019– 26 April 2019
- 8 July 2019– 19 July 2019
- 30 September 2019 – 11 October 2019

For further information, please contact us:

Pingi Maka

Freephone: 0800 99 88 11

Mobile: 021 883 290

Email: pingi@nzseg.com

Please RSVP interested numbers as soon as possible, to ensure that the necessary logistics can be put in place in preparation for your students impending arrival.





New Zealand Skills & Education Group

NEW LYNN CAMPUS

3033 Great North Road
New Lynn, Auckland
New Zealand

AVONDALE CAMPUS

2171 Great North Road
Avondale, Auckland
New Zealand

MANUKAU CAMPUS

6 Osterley Way & 5 Ryan Place
Manukau, Auckland
New Zealand

CITY CAMPUS

Level 2 & 3, 60 Federal Street
CBD, Auckland
New Zealand

HAMILTON CAMPUS

848 Victoria Street
Hamilton
New Zealand

0800 99 88 11

www.nzseg.com